

Surgiquipments

Wholesale & Retail: All Types of Surgical Goods
Specialist In O.T Table's & Lights (Sales & Services)

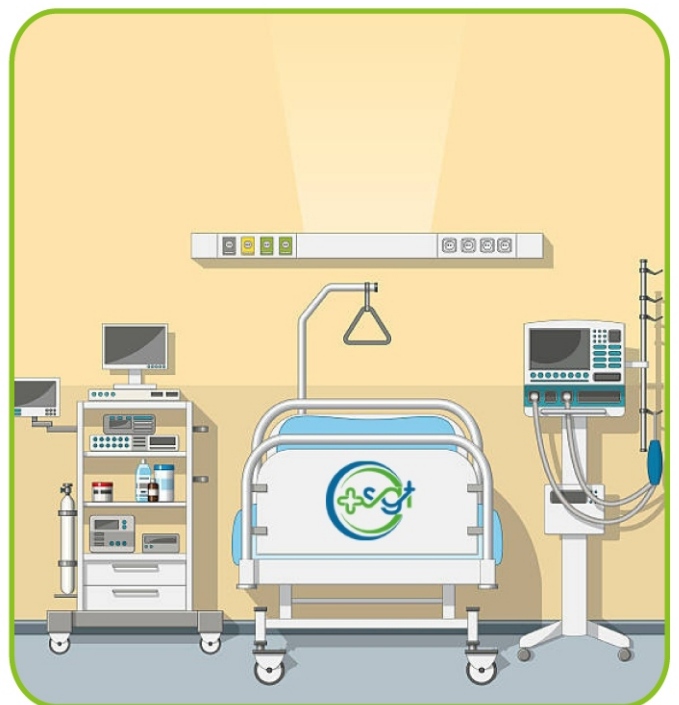
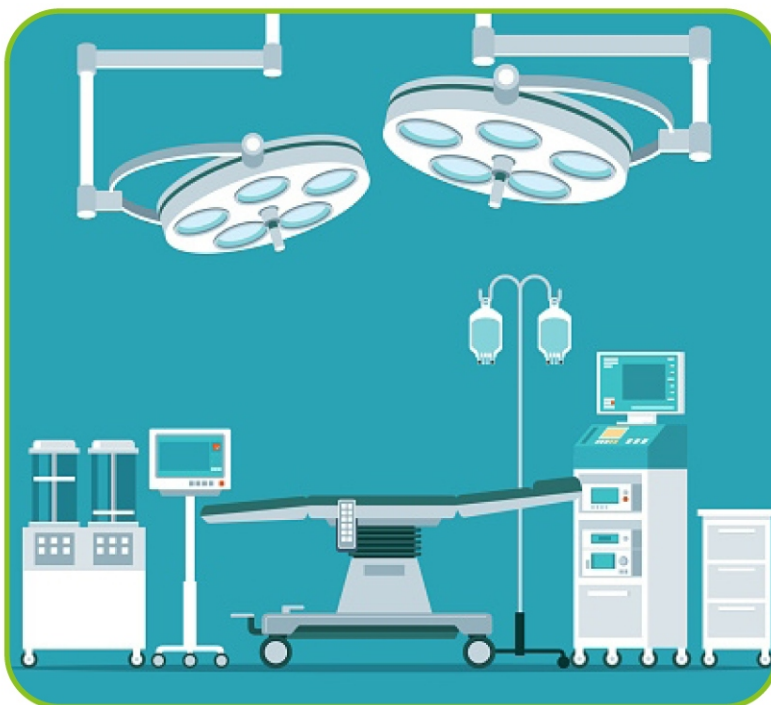


About Us

Our History dates back to 30 years when our business head Mr. Amit Kumar Sharma started his work in the industry on ground level as an engineer in manufacturing units of Operation Theatre lamps & Table's. His Role was to ameliorate products continuously with latest technology. By going around the country for installations, Demonstrations of Multiple Manufacturers and Dealers, we have chose some fine quality manufacturer's to bring you the best in class products. We ensure the best post sale services to all our customer's by providing 1 year warranty on almost all our products. Our end goal is to make consumer experience best in industry. Quality and customer satisfaction is our top-most priority.

Index

- O.T Tables
- O.T Lights



Notes



O.T Tables

General Surgery
Table

SGT-01

SPECIAL FEATURES

- Center Pillar
- Stainless Fitting
- In Built Kidney Bridge
- Five Sectional Radio-translucent top
- Base & Cover Made of Attractive Easy To Clean Stainless Steel
- Detachable Head & Leg Section
- Sophisticated Mechanics Provide Smooth, Step Less Articulation of The Table Top For Precise Patient Positioning.



Technical Data

• Length of Table	1900 mm
• Width of Table Top	520 mm
• Minimum Height	Min. 750 mm
• Maximum Height	Max. 1000 mm
• Trendelenburg	25°
• Reverse Trendelenburg	25°
• Lateral Tilt	±20°
• Back Section	±70°
• Head Section	±60°
• Leg Section	0°-90°
• Floor Locking System	Manual





SGT-02

General Surgery
Semi Electric Table



OPTIONAL: BATTERY BACKUP 

Technical Data

• Length of Table	1900 mm
• Width of Table Top	520 mm
• Minimum Height	Min. 750 mm
• Maximum Height	Max. 1000 mm
• Trendelenburg	25°
• Reverse Trendelenburg	25°
• Lateral Tilt	±20°
• Back Section	±70°
• Head Section	±60°
• Leg Section	0°-90°
• Floor Locking System	Manual

SPECIAL FEATURES

- Up & Down Electric control
- Center Pillar
- Stainless Fitting
- In Built Kidney Bridge
- Five Sectional Radio-translucent top
- Base & Cover Made of Attractive Easy To Clean Stainless Steel
- Detachable Head & Leg Section
- Sophisticated Mechanics Provide Smooth, Step Less Articulation of The Table Top For Precise Patient Positioning.

SGT-03

General Surgery
Full Electric Table



SPECIAL FEATURES

Technical Data

• Length of Table	1900 mm
• Width of Table Top	520 mm
• Minimum Height	Min. 750 mm
• Maximum Height	Max. 1000 mm
• Trendelenburg	25°
• Reverse Trendelenburg	25°
• Lateral Tilt	±20°
• Back Section	±70°
• Head Section	±60°
• Leg Section	0°-90°
• Floor Locking System	Manual

- We are providing SMPS based control box which can handle better voltage fluctuations, When SMPS is idle there is zero current consumption and saves power. These are as per new European and American standards where the idle power consumption should be zero and where transformer based system are outdated.
- We provide console which ergonomically designed to have an easy and better grip with spiral cable and it has LED backlit switch with symbolic position figures making it convenient to use even in the dark.
- We provide zero position facility i.e by pressing a single button OT table will come to default position.
- Interchangeable Head & Leg section
- We provide 2 memory function in control panel
- We provide indication of battery back-up in the control panel
- Head & foot section is manually operational by the means of Ratchet system
- The motion of table is easy with double swivel castors 100 mm diameter, in which 2 castor having break

SALIENT FEATURES

- Center Pillar • Stainless Fitting • In Built Kidney Bridge
- Detachable Head & Leg Section
- Five Sectional Radio-translucent top
- Stand by Battery Back-up With Recharging Circuit



SGT-04

General Surgery
Advance Table



Technical Data

• Length of Table	1900 mm
• Width of Table Top	520 mm
• Minimum Height	Min. 750 mm
• Maximum Height	Max. 1000 mm
• Trendelenburg	25°
• Reverse Trendelenburg	25°
• Lateral Tilt	±20°
• Back Section	±70°
• Head Section	±60°
• Leg Section	0°-90°
• Floor Locking System	Center Floor Locking

SPECIAL FEATURES

- We are providing SMPS based control box which can handle better voltage fluctuations, When SMPS is idle there is zero current consumption and saves power. These are as per new European and American standards where the idle power consumption should be zero and where transformer based system are outdated.
- We provide console which ergonomically designed to have an easy and better grip with spiral cable and it has LED backlit switch with symbolic position figures making it convenient to use even in the dark.
- We provide zero position facility i.e by pressing a single button OT table will come to default position.
- Interchangeable Head & Leg section
- We provide 2 memory function in control panel
- We provide indication of battery back-up in the control panel
- Head & Foot section is manually operational by the means of Ratchet system
- The motion of table is easy with double swivel castors 100 mm diameter, in which 2 castor having break

SALIENT FEATURES

- Sliding Top • Split Leg Section • In Built Kidney Bridge • Detachable Head & Leg Section
- Five Sectional Radio-translucent top • Stand by Battery Back-up With Recharging Circuit
- Center Pillar

SGT-05

C-ARM Compatible
Hydraulic



SPECIAL FEATURES

Technical Data

• Length of Table	1900 mm
• Width of Table Top	520 mm
• Minimum Height	Min. 750 mm
• Maximum Height	Max. 1000 mm
• Trendelenburg	25°
• Reverse Trendelenburg	25°
• Lateral Tilt	±20°
• Back Section	±70°
• Head Section	±60°
• Leg Section	0°-90°
• Floor Locking System	Manual

- Periphery Pillar
- Stainless Fitting
- Detachable Head, Leg & Pelvic Section
- In Built Kidney Bridge
- Five sectional Radio-Translucent top
- Base & Cover Made of Attractive easy to clean stainless steel
- Sophisticated mechanics provide smooth , step less articulation of the table top for precise patient positioning.



**SGT-06****C-ARM Compatible
Semi Electric****Technical Data**

• Length of Table	1900 mm
• Width of Table Top	520 mm
• Minimum Height	Min. 750 mm
• Maximum Height	Max. 1000 mm
• Trendelenburg	25°
• Reverse Trendelenburg	25°
• Lateral Tilt	±20°
• Back Section	±70°
• Head Section	±60°
• Leg Section	0°-90°
• Floor Locking System	Manual

SPECIAL FEATURES

- Electric Up & Down By Console
- Periphery Pillar
- Stainless Fitting
- Detachable head, leg & Pelvic section
- In Built Kidney Bridge
- Five sectional Radio-Translucent top
- Base & Cover Made of Attractive easy to clean stainless steel
- Sophisticated mechanics provide smooth, step less articulation of the table top for precise patient positioning.

SGT-07

C-ARM Compatible
Electric



Technical Data

• Length of Table	1900 mm
• Width of Table Top	520 mm
• Minimum Height	Min. 750 mm
• Maximum Height	Max. 1000 mm
• Trendelenburg	25°
• Reverse Trendelenburg	25°
• Lateral Tilt	±20°
• Back Section	±70°
• Head Section	±60°
• Leg Section	0°-90°
• Floor Locking System	Manual

SPECIAL FEATURES




- Periphery Pillar
- Electric Up & Down By Console
- Stainless Fitting
- Detachable Head, leg & Pelvic section
- Five sectional Radio-Translucent top
- Base & Cover Made of Attractive, easy to clean stainless steel
- In Built Kidney Bridge
- Sophisticated mechanics provide smooth, step less articulation of the table top for precise patient positioning.



SGT-08

C-ARM Compatible
Advance (5 Function)



-  ADDITIONAL CONTROL PANEL
-  MEMORY FUNCTION
-  ZERO POSITION

Technical Data

• Length of Table	1900 mm
• Width of Table Top	520 mm
• Minimum Height	Min. 750 mm
• Maximum Height	Max. 1000 mm
• Trendelenburg	25°
• Reverse Trendelenburg	25°
• Lateral Tilt	±20°
• Back Section	±70°
• Head Section	±60°
• Leg Section	0°-90°
• Floor Locking System	Manual

SPECIAL FEATURES

- This Electromatic Sliding Top O.T Table Is Suitable For All Kinds Of Surgery , Vascular, Cardio Neurology, Gynecology, Proctology, Laparoscopy, Traumatic, Plastic & Other Surgeries.
- The Base And Column Of Table Is Made Of High Quality Medical Grade Stainless Steel 304 . Non-reflecting Surface, Anti-bacterial And Easy To Clean.
- Top Sliding Movement Of 5 Inch Backward & Forward From Center.

SALIENT FEATURES

- Periphery Pillar • Electric Up & Down By Console • Stainless Fitting • Detachable Head, leg & Pelvic section
- Five sectional Radio-Translucent top • Base & Cover Made of Attractive, easy to clean stainless steel.
- Sophisticated mechanics provide smooth, step less articulation of the table top for precise patient positioning.
- In Built Kidney Bridge • Standby battery back-up with recharging circuit

SGT-09

Ophthalmic Table



SPECIAL FEATURES

Technical Data

• Length of Table	1900 mm
• Width of Table Top	520 mm
• Minimum Height	Min. 750 mm
• Maximum Height	Max. 1000 mm
• Leg Section	0°-90°
• Floor Locking System	Manual

- This Table is specially designed for Ophthalmic surgery.
- Three sectional table is provided with drainage system in the head section.
- The table has sturdy base, column made up of stainless steel, antibacterial and easy to clean.
- Electromotive height with the help of lightweight handheld control unit.

Standard Accessories

- Anesthesia Screen • IV Pole • Hand Rest • Mattress

SALIENT FEATURES

- Stainless Fitting • Detachable Head & Leg Section • Three sectional Radio-Translucent top • Base & Cover Made of Attractive, easy to clean stainless steel • Sophisticated mechanics provide smooth, step less articulation of the table top for precise patient positioning.





10

SGT-10

Gynecological
Obstetric Electric Table



Technical Data

• Length of Table	1900 mm
• Width of Table Top	520 mm
• Minimum Height	Min. 750 mm
• Maximum Height	Max. 1000 mm
• Trendelenburg	25°
• Reverse Trendelenburg	25°
• Lateral Tilt	±20°
• Back Section	±70°
• Head Section	±60°
• Leg Section	0°-90°
• Floor Locking System	Manual

GYNAE TRAY



SPECIAL FEATURES

- Obstetrics operating room table perfect for all kinds of gynecological operations.
- The cover for base and column is made of 304 stainless steel, good performance on anti-rust and easy to clean.

Standard Accessories

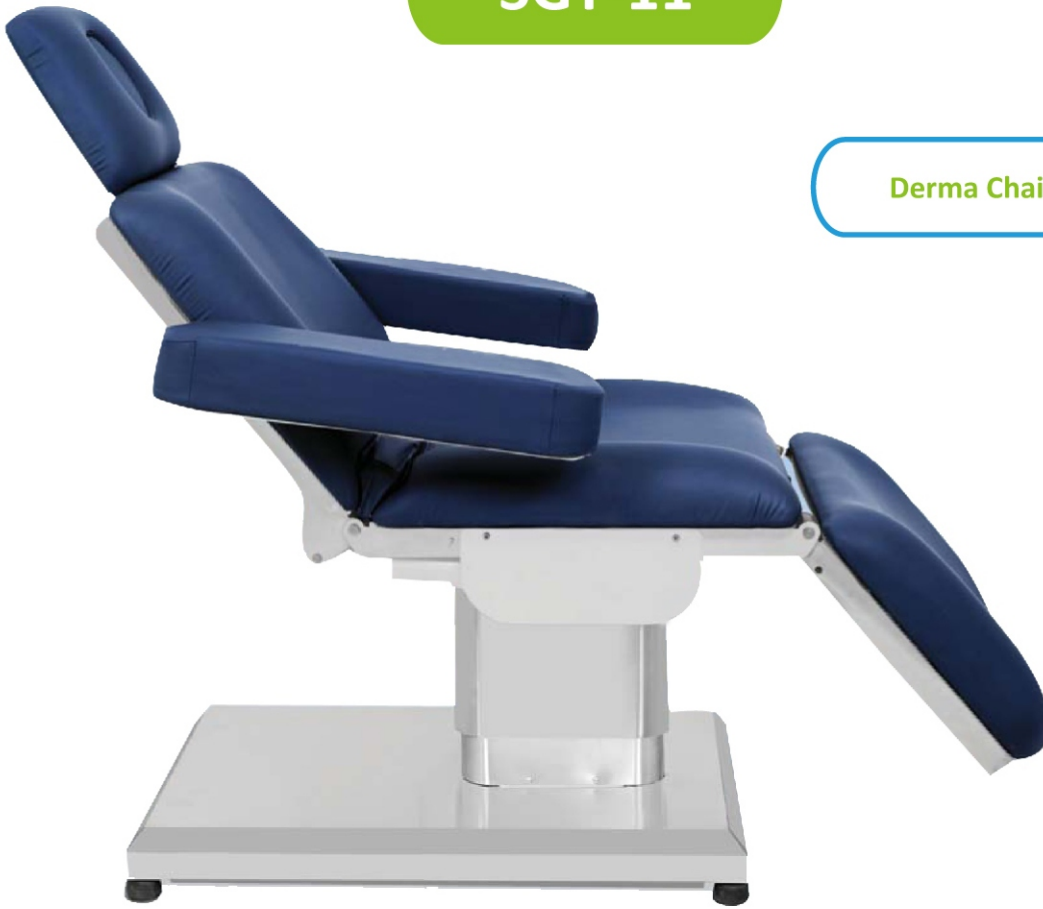
- Arm Rest 2 pieces

SALIENT FEATURES

- Periphery Pillar • Electric Up & Down By Console • Stainless Fitting • Detachable Head, leg & Pelvic section
- Five sectional Radio-Translucent top • Base & Cover Made of Attractive, easy to clean stainless steel
- Sophisticated mechanics provide smooth, step less articulation of the table top for precise patient positioning
- Standby battery back-up with recharging circuit

SGT-11

Derma Chair



SPECIAL FEATURES

- Luxurious Styling
- Height Adjustment with Console
- Multi Position Section Couch
- Suitable for Dermatology, Cosmetology & Laser Surgery
- Three Independent Motors for Height Leg & Back Section
- Elegant upholstery and all English colors

Technical Data

• Power	230 V 50 Hz
• Size (mm)	2000 x 610 x 700
• Motors	3 Independent
• Height Adjustment	Up / Down Remote Provided





12

SGT-12

Veterinary
Electric Table



SPECIAL FEATURES

- Electric Up & Down Function
- Suitable For Operating on animal Such as Sheep, dog etc
- Reasonably structured, high performance, easy to operate and has very strong practicability.
- Fully made of premium medical grade 304 stainless steel, it is heat resistant, corrosion protective and rust proof.
- The surface of the Table is v shaped which is easy to clean and disinfect , thus it'll avoid cross infection
- Equipped with fluid collecting system.

Standard Accessories

- IV Pole • Drainage Pipe

Technical Data

• Length of Table	1220mm (48")
• Width of Table	610mm (24")

SGT-13

Examination Lights



Nova

Elliptical

Round

Hexa

Technical Data

	Nova	Elliptical	Round	Hexa
• Intensity	55,000 LUX ±10%	25,000 LUX ±10%	40,000 LUX ±10%	45,000 LUX ±10%
• Size of Light Field	115 MM	90 MM	105 MM	115 MM
• Color Temperature	4000-5000 K	4800 K	4500 K	4500-5000 K
• LED Life	>50000 Hrs	>50000 Hrs	>50000 Hrs	>50000 Hrs
• No of LED	21	7	14	14
• Brightness Control	Touch	-	Touch	Touch
• Power Supply	220V/50Hz AC	220V/50Hz AC	220V/50Hz AC	220V/50Hz AC

OPTIONAL: BATTERY BACKUP



• Wall Mounted



• Wall Mounted with Extended Rod



Note

Made using High Quality Fire Resistant Polymer





SGT-14

Mobile Lights



Nova



Round

Technical Data

Nova/Hexa

Round

• Intensity	1,00,000 LUX ±10%	1,20,000 LUX ±10%
• Size of Light Field	150 MM	160 MM
• Color Temperature	4000-5000 K	4000-5000 K
• LED Life	>50000 Hrs	>50000 Hrs
• No of LED	76	14
• Brightness Control	Touch	Touch
• Power Supply	220V/50Hz AC	220V/50Hz AC



Hexa

Note Also Available in 3, 4, & 5 Reflectors both Nova and Hexa Shape

SGT-15

Ceiling Lights

Technical Data

Single Structure

3 Reflector

4 Reflector

5 Reflector

6 Reflector

• Intensity	1,00,000 LUX ±10%	1,20,000 LUX ±10%	1,25,000 LUX ±10%	1,50,000 LUX ±10%
• Size of Light Field	160 MM	200 MM	250 MM	300 MM
• Color Temperature	4000-5000 K	4000-5000 K	4000-5000 K	4000-5000 K
• LED Life	>50000 Hrs	>50000 Hrs	>50000 Hrs	>50000 Hrs
• No of LED	57	76	95	114
• Brightness Control	Touch	Touch	Touch	Touch
• Power Supply	220V/50Hz AC	220V/50Hz AC	220V/50Hz AC	220V/50Hz AC

Double Structure

3 Reflector

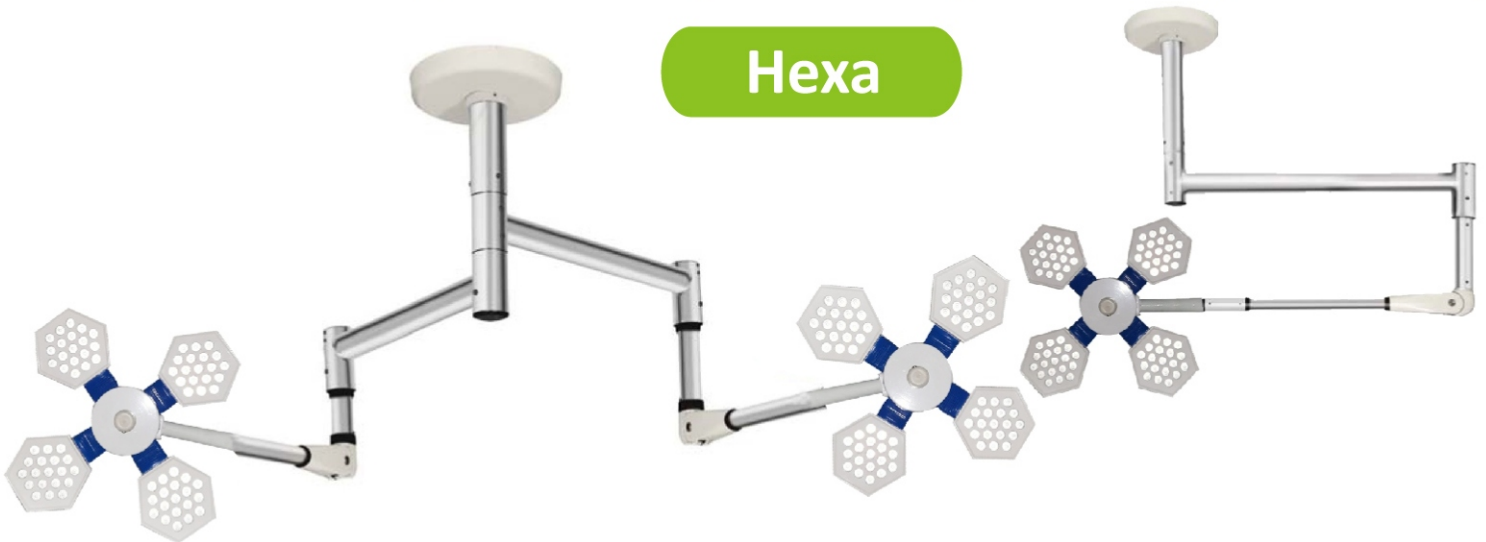
4 Reflector

5 Reflector

6 Reflector

• Intensity	1,00,000 + 1,00,000 LUX ±10%	1,20,000 + 1,20,000 LUX ±10%	1,25,000 + 1,25,000 LUX ±10%	1,50,000 + 1,50,000 LUX ±10%
• Size of Light Field	180 MM	220 MM	270 MM	320 MM
• Color Temperature	4000-5000 K	4000-5000 K	4000-5000 K	4000-5000 K
• LED Life	>50000 Hrs	>50000 Hrs	>50000 Hrs	>50000 Hrs
• No of LED	114	152	190	228
• Brightness Control	Touch	Touch	Touch	Touch
• Power Supply	220V/50Hz AC	220V/50Hz AC	220V/50Hz AC	220V/50Hz AC

Hexa





SGT-17

Ceiling Lights

Nova



Single Structure

3 Reflector

4 Reflector

5 Reflector

• Intensity	1,00,000 LUX ±10%	1,20,000 LUX ±10%	1,25,000 LUX ±10%
• Size of Light Field	160 MM	200 MM	250 MM
• Color Temperature	4000-5000 K	4000-5000 K	4000-5000 K
• LED Life	>50000 Hrs	>50000 Hrs	>50000 Hrs
• No of LED	57	76	95
• Brightness Control	Touch	Touch	Touch
• Power Supply	220V/50Hz AC	220V/50Hz AC	220V/50Hz AC

Technical Data

Double Structure

3 Reflector

4 Reflector

5 Reflector

• Intensity	1,00,000 + 1,00,000 LUX ±10%	1,20,000 + 1,20,000 LUX ±10%	1,25,000 + 1,25,000 LUX ±10%
• Size of Light Field	180 MM	220 MM	270 MM
• Color Temperature	4000-5000 K	4000-5000 K	4000-5000 K
• LED Life	>50000 Hrs	>50000 Hrs	>50000 Hrs
• No of LED	114	152	190
• Brightness Control	Touch	Touch	Touch
• Power Supply	220V/50Hz AC	220V/50Hz AC	220V/50Hz AC



Note

Same Light Available in Single Structure also

SGT-18

Ceiling Lights

Round



Technical Data

	Single Structure	Double Structure
• Intensity	1,50,000 LUX ±10%	1,50,000 + 1,50,000 LUX ±10%
• Size of Light Field	15 - 30 CMS	20 - 40 CMS
• Color Temperature	3500-5000 K	3500-5000 K
• LED Life	>50000 Hrs	>50000 Hrs
• No of LED	42	84
• Brightness Control	Touch/Remote	Touch/Remote
• Power Supply	220V/50Hz AC	220V/50Hz AC



Note Same Light Available in Single Structure as SGT 16

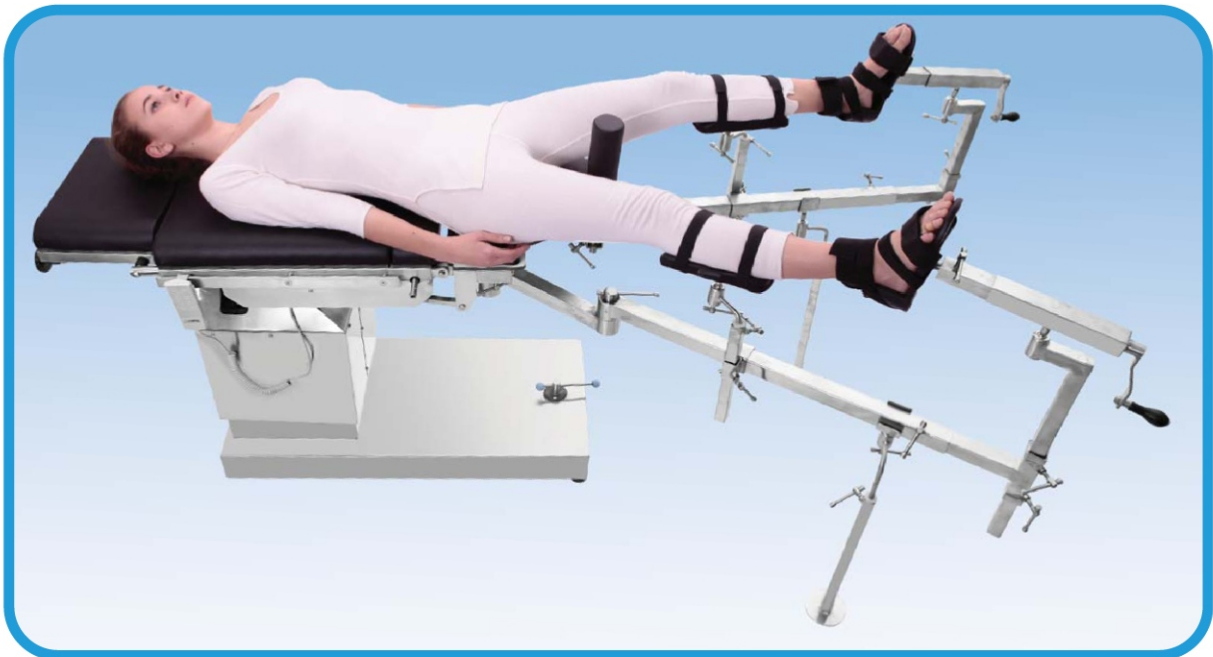




SGT-19



Ortho Attachment Base Lock



Ortho Attachment Hanging Type

Table & Accessories



SHOULDER SUPPORT



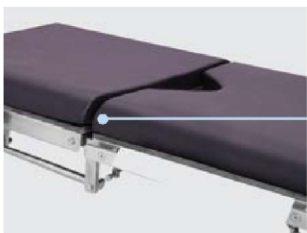
ARM REST



CLAMPS



ANESTHETIC SCREEN



MATTRESS



LEG SUPPORT



Accessories



Fixator



Ortho Attachment
Stand



Accessories
Stand



Knee Support



Horse Shoe



Neuro
Attachment



Installation, Service
& Maintenance

We Also offer All Tables & Lights

- Installation
- Repair & Maintenance

**Note: Data and Specifications given in this catalogue are approximate and for customer information only
As we believe in amelioration, we reserve the right to modify the design without prior notice**



post-operating wards



Scan to Chat with us



**Surgiquipments
Girdharilal Traders**



Scan for Location

Prashant Sharma: +91-7893769200, Amit Sharma: +91-9849050011
Address: 5-8-316, Ground Floor Shop No - 8, Raghav Ratna Towers,
North Block, Chirag-Ali-Lane, Nampally, Hyderabad- 500 001. (T.S) INDIA.
E-mail: surgiquipments@gmail.com